

ANTIBODY TESTING REPORT

SUMMARY

Antigen: Erk1 (Uniprot# P27361)

Method tested: Western Blotting

Laboratory ID: LAB07

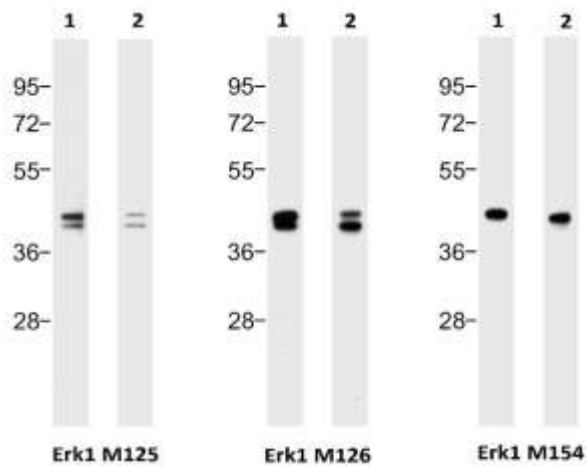
Project ID: AR143

With thousands of proteins and often hundreds of associated antibodies, the selection of a specific antibody can be both time-consuming and expensive. Antibody Resource is spearheading a unique initiative designed to compare antibodies from numerous suppliers using identical samples/tissues and an identical protocol. In doing so, we hope to enable scientists to form an unrivalled opinion of which is the most suitable antibody for their research and in particular, which is going to require the least amount of optimisation, a process which can often take weeks or months.

For the purposes of the antibody comparison initiative, we select the best antibodies from each manufacturer and then compare them side-by-side using the same experimental conditions to provide a direct comparison. The antibodies are collected centrally, repackaged and given an internal reference ID prior to delivery to independent laboratories to ensure objective testing and to minimise bias.

Disclaimers: There is a possibility that results may vary between antibody lots. The results are indicative of the experimental conditions described within. Variations to this protocol may give alternative results.

RESULTS

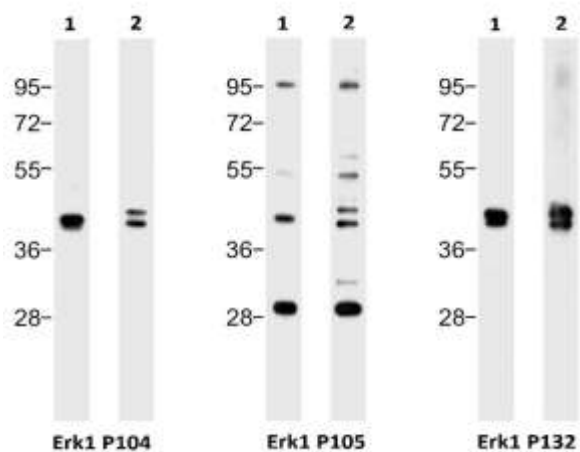


Western blot analysis of:-

(1) MCF7 whole cell lysate

(2) NIH3T3 whole cell lysate

using various anti-Erk1 antibodies (see Method for primary and secondary antibody details).



Western blot analysis of:-



(1) MCF7 whole cell lysate

(2) NIH3T3 whole cell lysate

using various anti-Erk1 antibodies (see Method for primary and secondary antibody details).

METHOD

Antibodies

	Primary antibody	Secondary antibody
	Erk1 M125 at 1/1000 (Santa Cruz)	Goat anti-Mouse IgG (H+L) Cross Adsorbed Secondary Antibody, HRP conjugate (ThermoFisher Scientific, Cat no. 31446) at 1/10,000
	Erk1 M126 at 1/1000 (Cell Signalling)	Goat anti-Rabbit IgG (H+L) Cross Adsorbed Secondary Antibody, HRP conjugate (ThermoFisher Scientific, Cat no. 31462) at 1/10,000
	Erk1 M154 at 1/1000 (Novus)	Goat anti-Mouse IgG (H+L) Cross Adsorbed Secondary Antibody, HRP conjugate (ThermoFisher Scientific, Cat no. 31446) at 1/10,000
	Erk1 P104 at 1/1000 (abcam)	Goat anti-Rabbit IgG (H+L) Cross Adsorbed Secondary Antibody, HRP conjugate (ThermoFisher Scientific, Cat no. 31462) at 1/10,000
	Erk1 P105 at 1/250 (Supplier 22)	Goat anti-Rabbit IgG (H+L) Cross Adsorbed Secondary Antibody, HRP conjugate (ThermoFisher Scientific, Cat no. 31462) at 1/10,000
	Erk1 P132 at 1/5000 (StressMarq)	Goat anti-Rabbit IgG (H+L) Cross Adsorbed Secondary Antibody, HRP conjugate (ThermoFisher Scientific, Cat no. 31462) at 1/10,000



= Component of the Erk1 Superstarter Antibody Panel. See end of report for details.

Samples

Sample	Description
MW markers (Thermo Fisher Scientific, Cat no. 26619)	MW markers at 10, 17, 28, 36, 55, 72, 95, 130 and 250kDa.
MCF7 (Human breast adenocarcinoma cell line) whole cell lysate at 20 µg/lane	Lane 1 - Test

NIH3T3 (Mouse embryonic fibroblast cell line) whole cell lysate at 20 µg/lane	Lane 2 - Test
---	---------------

Detection Kit

Clarity™ Western ECL Blotting Substrate (Bio-rad, Cat no: 170-5061, Lot number: 102030671).

PROTOCOL

Western Blotting was performed using Invitrogen's Novex® XCell SureLock® Mini-Cell electrophoresis system followed by semi dry transfer onto PVDF membranes using Bio-Rad's Trans-Blot® SD Semi-Dry Transfer Cell and visualized using X-ray film as follows:-

1. Samples (see table above) were incubated with 1X SDS Sample Buffer containing 2% SDS and 100mM DTT at 95°C for 5 minutes prior to loading.
2. The samples were then loaded and resolved on a 12% SDS-polyacrylamide gel (see table above for amount protein per lane).
3. Proteins were transferred onto PVDF membrane by semi dry transfer and confirmed by amido black staining.
4. The immunoblot membrane was blocked in Tris buffered saline (TBS) containing Tween-20 (TBST) and 5% non-fat dry milk powder (blocking buffer) for 2 hours at room temperature with gentle agitation and then washed for 5 minutes in TBST.
5. The membrane was then immersed with the protein side up in the primary antibody solution diluted in TBST containing 3% non-fat dry milk powder (dilution buffer) overnight at 4°C with gentle agitation. Each antibody was diluted according to the working range suggested by the supplier (for details see table above).
6. Following two washes for 5 minutes each and one wash for 10 minutes at room temperature with TBST, the membrane was incubated in the secondary antibody (for details see table above) diluted in dilution buffer for 1 hour at room temperature with gentle agitation.
7. The membrane was then washed three times for 5 minutes and then one wash of 10 minutes with TBST at room temperature.
8. After draining away excess TBST, signals were detected with the detection kit detailed above, the blots exposed on X-ray film and the final images obtained using PS software.

EXPERIMENTAL NOTES

Under these experimental conditions, Erk1 M125, Erk1 M126, Erk1 M154, Erk1 P104 and Erk1 P132 exhibited immunoreactivity in both the Human and Mouse cell lysates with a band around the expected MW of Erk1 (43kDa). The majority of these antibodies also detect a band at around 41kDa, reflecting their immunoreactivity with Erk2. Of the antibodies tested, only Erk1 M154 detected Erk1 only. Using this method, Erk1 P105 demonstrated a number of bands in addition to those at the expected MWs of Erk1 and Erk2.

SUPERSTARTER ANTIBODY PANELS



A panel of Superstar antibodies in trial sizes, to enable you to economically test the best antibodies, to determine which is going to be the best for your research project for only \$338, €294, £218.

The Erk1 Superstarter Antibody Panel consists of:

1 x [sc-7383](#) (Santa Cruz Biotechnology)

1 x [4695S](#) (Cell Signaling Technology)

1 x [NB100-56376](#) (Novus Biologicals)

<http://www.antibodyresource.com/superstars>

Images of Superstar Erk1 antibodies:

