



# Enhanced Validation of Antibodies

Specific and reproducible antibodies  
from Atlas Antibodies



# Antibody Validation

## Triple A Polyclonals

Triple A Polyclonals are originally developed within the academic Human Protein Atlas (HPA) project ([proteinatlas.org](http://proteinatlas.org)). HPA aims to characterize all human proteins in the majority of normal and cancerous tissues, as well as on a subcellular level. The uniqueness and specificity of the antibodies used, originate from a thorough selection of antigen regions, affinity purification of the polyclonal antibodies, a stringent selection of approved antibodies and validation using different methods.

## PrecisA Monoclonals

Atlas Antibodies also provides a selected number of mouse monoclonal antibodies, under the brand name PrecisA Monoclonals. PrecisA Monoclonals are developed with careful antigen design and are isotyped for multiplex possibilities.

## Transparency

All antibody characterization data achieved using different applications are freely accessible on the Human Protein Atlas portal. For immunohistochemistry (IHC), every antibody is supplied with 500 images, from 44 normal tissues and 20 cancers.

- The antigen sequences are provided on the product pages for all antibodies.
- Precise epitope information is supplied for PrecisA Monoclonals (where available).
- Our scientific support team will be happy to share anything you may like to know about production and quality control of each antibody.

## Enhanced Validation of Antibodies

To further validate our antibodies we apply enhanced validation, based on the recommendations by the International Working Group for Antibody Validation (IWGAV), as published in *Nature Methods*, Uhlén *et al.*<sup>1</sup>. The group consists of researchers from institutions in USA and Canada, such as Stanford University, Yale University, MIT, UCSD, University of Toronto, NIH, EMBL, Niigata University in Japan and the Science for Life laboratory in Sweden.

In the article, five conceptual pillars for antibody validation are suggested to be used in an application specific manner. Based on these pillars, HPA and Atlas Antibodies have developed an Enhanced Validation Strategy, resulting in the following five methods:

## Five Conceptual Methods

### 1. Genetic validation:

Verifying by target knockdown or knockout.

### 2. Orthogonal validation:

Verifying with a non-antibody based method.

### 3. Independent antibody validation:

Two antibodies with different epitopes verifying each other.

### 4. Recombinant expression validation:

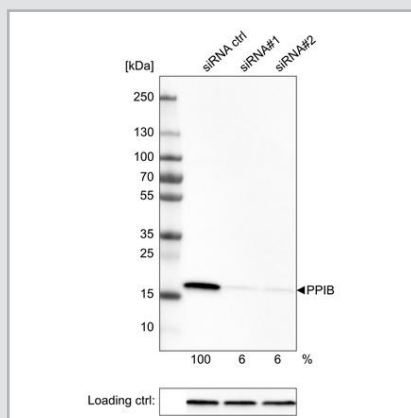
Verifying with an over-expressed or tagged version of the target.

### 5. Capture MS validation:

Verifying the protein size detected by the antibody with results obtained by a capture MS method.

At least one of the methods must be used for an antibody to receive Enhanced Validation Status in a specific application.

1.

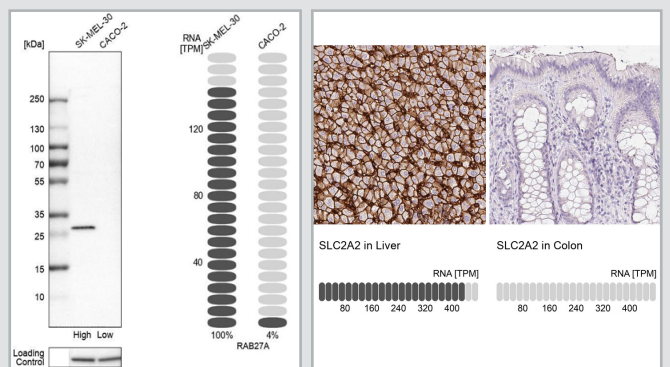


**Figure 1.**

Example of genetic validation by siRNA knockdown in Western blot using the Anti-PPIB antibody. U-251 cells have been transfected with control siRNA and two target specific siRNA probes. Downregulation of antibody signal confirms target specificity. The remaining intensity relative control lane is indicated as a percentage.



2.



**Figure 2.**

Examples of orthogonal validation in WB and IHC. Left: WB analysis in human cell lines SK-MEL-30 and CACO-2 using Anti-RAB27A antibody (HPA001333). Corresponding RAB27A RNA-seq data (TPM values) is presented for the same cell lines. Right: IHC staining of liver and colon tissues using the Anti-SLC2A2 antibody (HPA028997). The corresponding RNA-seq data (TPM values) for the same tissues are presented below. In both examples, samples with known high and low RNA expression are chosen.



### 1. Genetic Validation

The target protein can be down-regulated on a genetic level using siRNA or CRISPR-Cas9. If knock-down (by siRNA) or knock-out (by CRISPR) of the corresponding gene correlates with absence or decrease of antibody signal, the antibody is shown to be specific for its target. This is exemplified in Figure 1 where the Anti-PPIB antibody AMAb91245 is used in Western Blot (WB) analysis in U-251 cells. The antibody signal is down regulated in the cells silenced by PPIB siRNA.



### 2. Orthogonal Validation

By using a non-antibody based method for target quantification, the antibody signal can be validated by comparing the results from the different methods across multiple samples.



One approach is to compare the antibody staining intensities over multiple samples with varying expression of the target gene, with RNA-seq data in the same samples. This is illustrated in Figure 2, using WB analysis in human cell lines SK-MEL-30 and Caco-2 using Anti-RAB27A antibody HPA001333. Corresponding RAB27A RNA-seq data (TPM values) are presented for the same cell lines.

### 3. Independent Antibody Validation

Two antibodies directed against different regions of the same target protein may validate each other when compared in a set of relevant tissues. This is exemplified in Figure 3 with two antibodies directed against different regions of the A2ML1 protein used in the immunohistochemistry application. Both antibodies show positive staining in liver, but are negative in tonsil, colon and kidney.



### 4. Recombinant Expression Validation

An antibody signal can also be validated using an over-expressed or tagged version of the target protein.

When over-expressing the target protein in a cell line, the antibody is validated by comparing the signal from the over-expressed version with the unmodified endogenous target protein. This approach is exemplified in Figure 4a.



Alternatively, the target protein is tagged by an affinity tag or a fluorescent protein. The pattern displayed by the tagged target protein is matched to the antibody signal.

A match confirms that the antibody is recognizing its target protein. Validation by tagged proteins can be applied in immunocytochemistry-immunofluorescence (ICC-IF) and is shown in Figure 4b.

### 5. Capture MS Validation

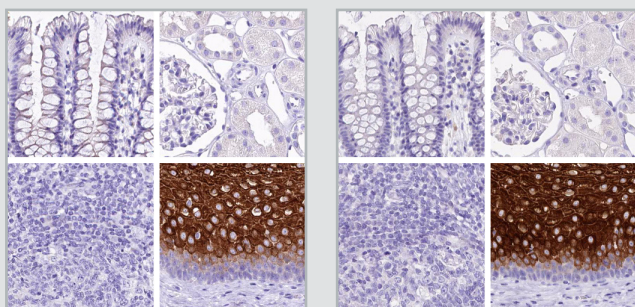
In this method, the staining pattern and the protein size detected by the antibody is compared with results obtained by a capture Mass Spectrometry (MS) method. The size detected by the antibody should be equivalent to the size of the corresponding target protein detected in capture MS.

### Atlas Antibodies and Validation

At Atlas Antibodies we produce highly characterized antibodies and have always worked extensively with validation in collaboration with the Human Protein Atlas. We are happy to implement Enhanced Validation providing an additional layer of security to a constantly increasing number of antibodies.



### 3.



**Figure 3.**

The two Anti-A2ML1 antibodies HPA038847 (Antibody 1) and HPA038848 (Antibody 2) target different regions of A2ML1. Antibody stainings across relevant positive and negative tissues are similar between the two, and the antibodies validate each others staining pattern in IHC. Here, the two antibodies are used for staining esophagus (positive for A2ML1 using both antibodies), tonsil, colon and kidney tissues (negative for A2ML1 using both antibodies).

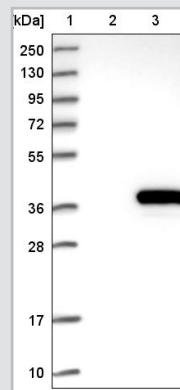


### 4.

**Figure 4a.**

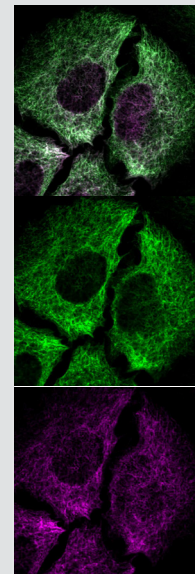
Example of recombinant expression validation in Western blot using the Anti-ACY3 antibody (HPA039219).

Lane 1: marker,  
Lane 2: negative control (vector only transfected HEK293T lysate),  
Lane 3: ACY3 over-expression lysate (Co-expressed with a C-terminal myc-DDK tag (~3.1 kDa) in mammalian HEK293T cells, LY408962).



**Figure 4b.**

Immunofluorescent staining of transgenic HeLa cells using Anti-NES antibody HPA006286 shows positivity in intermediate filaments (in green). Antibody staining overlaps with GFP tagged nestin protein (in purple).



# SELECTED REFERENCES FROM THE HUMAN PROTEIN ATLAS PROJECT

Uhlén M, Bandrowski A, Carr S, Edwards A, Ellenberg J, Lundberg E, Rimm DL, Rodriguez H, Hiltke T, Snyder M and Yamamoto T.

## **A Proposal for Validation of Antibodies.**

*Nature Methods* 2016 13, 823–827.

Uhlen M, Zhang C, Lee S, Sjöstedt E, Fagerberg L, Bidkhorji G, Benfeitas R, Arif M, Liu Z, Edfors F, Sanli K, von Feilitzen K, Oksvold P, Lundberg E, Hober S, Nilsson P, Mattsson J, Schwenk JM, Brunnström H, Glimelius B, Sjöblom T, Edqvist PH, Djureinovic D, Micke P, Lindskog C, Mardinoglu A, Pontén F.

## **A pathology atlas of the human cancer transcriptome.**

*Science*. 2017 357(6352)

Thul PJ, Åkesson L, Wiking M, Mahdessian D, Geladaki A, Ait Blal H, Alm T, Asplund A, Björk L, Breckels LM, Bäckström A, Danielsson F, Fagerberg L, Fall J, Gatto L, Gnann C, Hober S, Hjelmare M, Johansson F, Lee S, Lindskog C, Mulder J, Mulvey CM, Nilsson P, Oksvold P, Rockberg J, Schutten R, Schwenk JM, Sivertsson Å, Sjöstedt E, Skogs M, Stadler C, Sullivan DP, Tegel H, Winsnes C, Zhang C, Zwahlen M, Mardinoglu A, Pontén F, von Feilitzen K, Lilley KS, Uhlén M, Lundberg E.

## **A subcellular map of the human proteome.**

*Science*. 2017 356(6340).

Edfors F, Danielsson F, Hallström BM, Käll L, Lundberg E, Pontén F, Forsström B and Uhlén M.

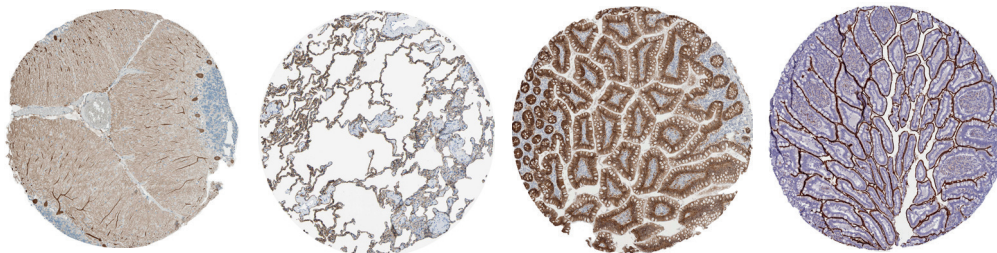
## **Gene-specific correlation of RNA and protein levels in human cells and tissues.**

*Mol Syst Biol*. 2016 Oct; 12(10): 883.

Uhlén M, Fagerberg L, Hallström BM, Lindskog C, Oksvold P, Mardinoglu A, Sivertsson Å, Kampf C, Sjöstedt E, Asplund A, Olsson I, Edlund K, Lundberg E, Navani S, Szigartyo CA, Odeberg J, Djureinovic D, Takanen JO, Hober S, Alm T, Edqvist PH, Berling H, Tegel H, Mulder J, Rockberg J, Nilsson P, Schwenk JM, Hamsten M, von Feilitzen K, Forsberg M, Persson L, Johansson F, Zwahlen M, von Heijne G, Nielsen J, Pontén F.

## **Tissue-based map of the human proteome.**

*Science*. 2015 Jan;23;347(6220).



## **atlasantibodies.com**

Our website provides you with easy online access to all characterization data and information on how to order. You can place your order online or via via e-mail.

Contact us at [contact@atlasantibodies.com](mailto:contact@atlasantibodies.com) with your antibody related questions, we're happy to help.

You'll find we're **Totally Human.**